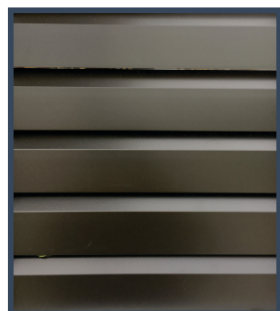
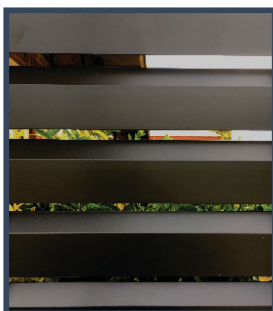




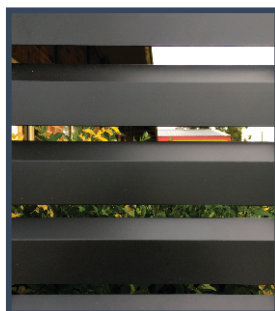
Superior Quality



-2 mm



10 mm



15 mm



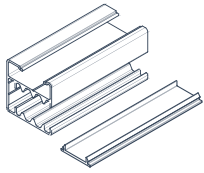
30 mm



50 mm

Save With DIY Panels & Gates

# For Assembly Instructions See Assembly Brochure



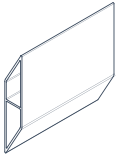
## Fixing Channel & Cover Plate

### Lengths

1860mm x 35x35mm  
2340mm x 35x35mm

### Description

Two fixing channels pieces are required to build one Loov-A-Slat® panel or gate. Cut the fixing channels to the desired height. Remove the cover plate from the channel and fasten fixing channel to the structure.



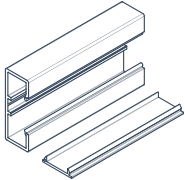
## Loov-A-Slat®

### Lengths

2340mm x 76mm  
3100mm x 76mm

### Description

Slide Loov-A-Slat® and spacer into the fixing channel alternately until your required height is reached. Screw off every 4th slat as stated in assembly instruction brochure. Replace Cover Plate by sliding down Fixing Channel face.



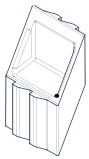
## Bracing Channel & Cover Plate

### Lengths

1800mm x 40x15mm

### Description

Loov-A-Slats® are manufactured at 2.340mm and 3.100mm long. Cut Loov-A-Slats® to required length. The bracing channels are required to be tek screwed onto rear through centre of the panel when it is greater than >1800mm wide.



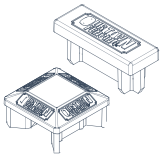
## Angled Spacer

### Gap Sizes

-2mm 30 pack  
10mm 30 pack  
15mm 30 pack  
30mm 30 pack  
50mm 30 pack

### Description

The spacers are used to give you the gaps you require. Spacers slide into your fixing channels between the Loov-A-Slats®. There are 5 gap sizes to choose from depending on the desired amount of privacy.



## Channel Caps

### Items

Bracing Channel Cap  
Fixing Channel Cap

### Description

Place Bracing Caps at top of Bracing Channel. Place Fixing Caps at top of Fixing Channel.

## 11 Loov-A-Slat® Colours

<b>Surfmist®</b> <small>aka. Frost®, Off White</small>	<b>Riversand®</b> <small>aka. Beige®, Stone</small>	<b>Pale Eucalypt®</b> <small>aka. Meadow®, Mist Green</small>	<b>Woodland Grey®</b> <small>aka. Grey Ridge®, Slate Grey</small>
<b>Shale Grey™</b> <small>aka. Snow Gum®, Gull Grey</small>	<b>Dune®</b> <small>aka. Seedpod®, Birch</small>	<b>Jasper®</b> <small>aka. Plateau®</small>	<b>Monument®</b> <small>aka. Shadow, Gun Metal Grey</small>
<b>Black</b>	<b>Domain®</b> <small>aka. Primrose®, Smooth Cream</small>	<b>Paperbark®</b> <small>aka. Terrace®, Merino</small>	

## Specifications

Our Town Fencing's aluminium DIY Loov-A-Slat® system is designed to suit several different applications. The Loov-A-Slat® system can be erected as a privacy screen, panels & gates. With the choice of five gap sizes to suit your privacy needs. Gap sizes are -2mm, 10mm, 15mm, 30mm & 50mm. If you need to follow the fall of the land Loov-A-Slat® can also be raked to suit. Supplied in kit form or as separate pieces & powder coated in 11 modern colours ready for you to take home.

Your Local Distributor



Australia's Leading Manufacturer of Quality Fencing Material

[www.ourtownfencing.com.au](http://www.ourtownfencing.com.au)  
sales@ourtownfencing.com.au

1300 901 401

